

-
- Will contribute to the achievement of the national target of 90% of electricity generation from renewable energy sources by 2025
 - Will help New Zealand meet its international environmental obligations.

The Consenting Process

The Minister for the Environment has recently referred our applications for resource consent for this project to an independent Board of Inquiry, describing a Board of Inquiry as the most transparent and fair way to decide the outcome of this proposal.

The role of the Board is to consider Mighty River Power's applications, hold public hearings that allow interested parties to comment, and decide whether or not the Turitea project should go ahead.

Anyone can have their say by making a submission to the Ministry. Submissions are scheduled to close on February 23, 2009; for more information on how to make a submission, visit the ministry's website, www.mfe.govt.nz

What Next?

- The Minister for the Environment publicly notifies the applications (January 24, 2009).
- The Board receives all the submissions from the Minister. (Submissions scheduled to close February 23, 2009)
- The Board holds a public hearing. All submitters who wish to be heard by the Board will be advised in advance of the hearing.
- The Board releases a draft report. This is sent to all submitters, Mighty River Power, the local authorities involved, the Environment Minister and all submitters for comment.
- The Board releases its decision on Mighty River Power's resource consent applications.

How Do I Get More Project Information?

If you want to learn more about the Turitea Wind Farm Project, please contact Mighty River Power:

WEB www.mightyriver.co.nz

EMAIL turitea@mightyriver.co.nz

TEL 0800 TURITEA

MIGHTY RIVER POWER LIMITED

TURITEA WIND FARM

THE TURITEA WIND FARM

An exciting opportunity for a world-class development

In the Manawatu, New Zealand has a wind resource equal to, or better than, most wind farms anywhere in the world and - at Turitea in particular - there is an exciting opportunity to create a world-class wind farm.

Because of the consistency of wind flow, the Turitea site has advantages for wind generation the envy of other countries. It's an exciting prospect for the region and the nation - a significant new source of reliable, renewable electricity to meet the nation's growing need for electricity.

Mighty River Power was pleased to be selected by the Palmerston North City Council as its preferred partner to develop a wind farm in the Turitea Reserve, including the opportunity to include adjoining landowners to be part of a larger-scale development.

We've listened, considered and acted

Mighty River Power has an excellent reputation for working with the communities in which we operate to ensure local concerns are carefully considered. Since being selected as Council's preferred partner for the Turitea development, we've consulted with local and regional councils, our prospective neighbours, government departments and agencies, local Iwi, and various other interested groups such as Reserve users, recreational groups, and the wider community generally.

As part of this consultation and discussion, we have carefully considered community feedback on the proximity of proposed turbine sites to houses. We have also received expert environmental advice on siting the proposed turbine sites.

In response to concerns expressed by the local community, and in line with the advice of our environmental experts, we have modified our proposal by removing nine potential turbine sites from our original plan. We believe we have now achieved a balance of issues relating to proposed turbine sites, but will keep consulting and listening to the community.

Your views matter to us

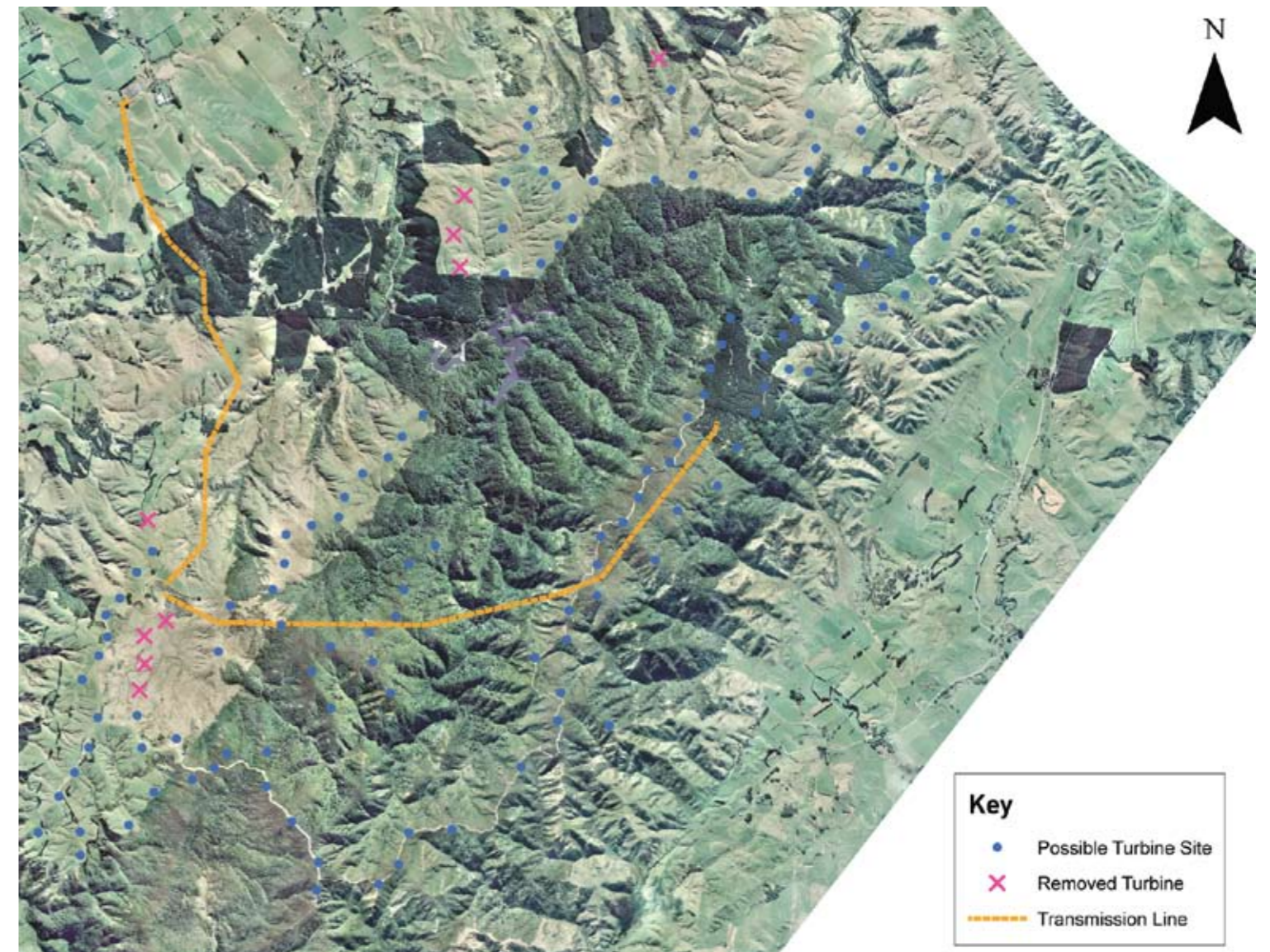
Mighty River Power is committed to continuing meaningful consultation during and beyond the resource consent process. We will be having several more Information Days where the newly modified plan can be discussed.

We will continue to listen to public feedback during and beyond the upcoming consultation process.

The modified Turitea Wind Farm

Including the recent layout changes, the proposed Turitea Wind Farm design consists of:

- 127 potential turbine zones
 - 62 within the Turitea Reserve
 - 65 on adjacent private properties
- up to 122 wind turbines
 - maximum turbine height of 125m
 - Up to 80m hub height
 - Up to 45m blade length
- three blades per turbine
- two internal substations
- overhead transmission lines
 - 6.1km within wind farm
 - 5.2km from wind farm to Linton Substation (national grid)
- up to three 80m high wind monitoring masts



ABOVE: MODIFIED TURITEA WIND FARM LAYOUT

Benefits for the city, the region and the nation

The Turitea wind farm:

- Will create approximately 250 jobs during the construction phase
- Will inject (directly and indirectly) somewhere between \$420 million and \$504 million into the local economy during construction and \$1.9 million a year once operating
- Provides the Palmerston North City Council, on behalf of the community, the opportunity and resources to develop an Eco-park within the Turitea Reserve
- Will generate sufficient renewable electricity to power approximately 140,000 houses
- Makes use of the world-class wind resource that exists in the Manawatu
- Will include re-vegetation of existing and recently cleared pine plantations, ongoing pest and weed control, and will enable species re-introduction (in consultation with relevant stakeholders including DoC and local iwi) and the ongoing monitoring of plant and animal life
- Will generate income for the Palmerston North City Council to spend on reserves in the city on behalf of the community
- Will promote the sustainable management of freshwater resources and include an active water quality monitoring programme
- Incorporates best-practice wastewater and storm water management programmes
- Will meet the requirements of the district plan and other relevant standards in relation to noise